



The Palm on South Padre Island Drive  
 7218 South Padre Island Drive  
 Corpus Christi, TX 78412

[comcapp.com/thepalm](http://comcapp.com/thepalm)  
[PalmOnSPID007@myLTSMail.com](mailto:PalmOnSPID007@myLTSMail.com)  
 877-375-7038

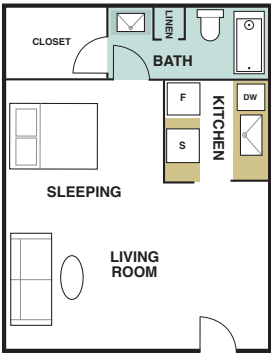


**Great Location. Great Value.**

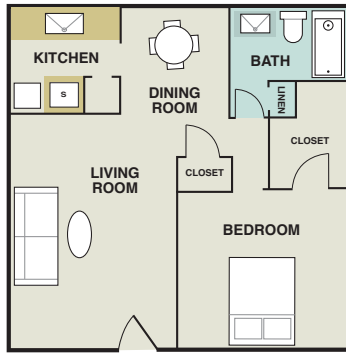
Now under new ownership and new management, The Palm is conveniently located near Texas A&M Corpus Christi, NAS-Corpus Christi, and the Army Depot.

Our studio, 1, 2 and 3-bedroom apartments offer you a variety of floor plans and amenities at a great price, including a pool and whirlpool, air-conditioned laundry facilities, and discounted extended basic cable.

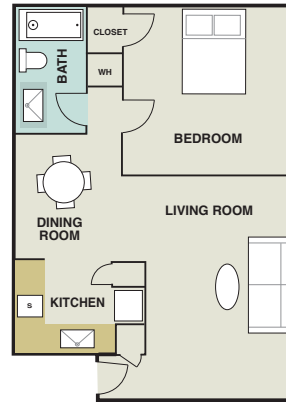
We're only 10-15 minutes away from Padre Island Beach and close to everything: major malls, hospitals, schools, churches and banks.



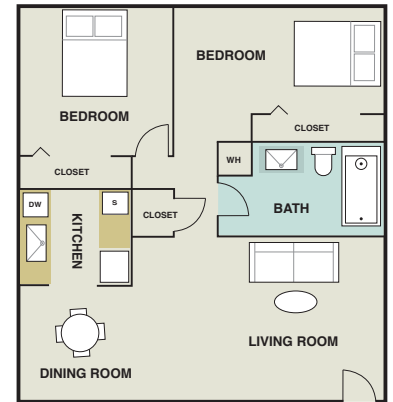
**"Bali"**  
 Studio  
 520 Square Feet



**"Merida"**  
 1 Bedroom / 1 Bathroom  
 625 Square Feet



**"Fiji"**  
 1 Bedroom / 1 Bathroom  
 680 Square Feet

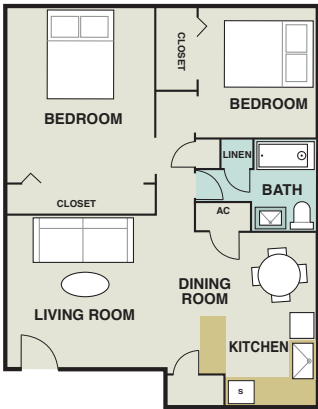


**"Havana"**  
 2 Bedroom / 1 Bathroom  
 812 Square Feet

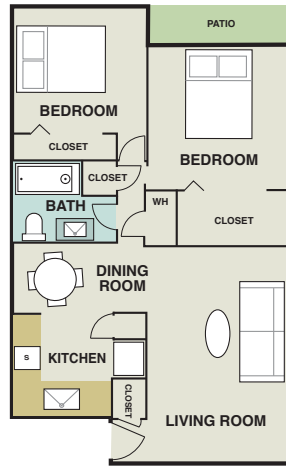


The Palm on South Padre Island Drive  
 7218 South Padre Island Drive  
 Corpus Christi, TX 78412

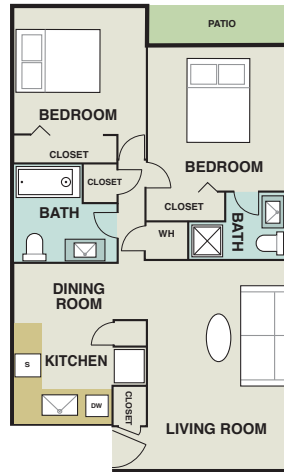
[comcapp.com/thepalm](http://comcapp.com/thepalm)  
[PalmOnSPID007@myLTSMail.com](mailto:PalmOnSPID007@myLTSMail.com)  
 877-375-7038



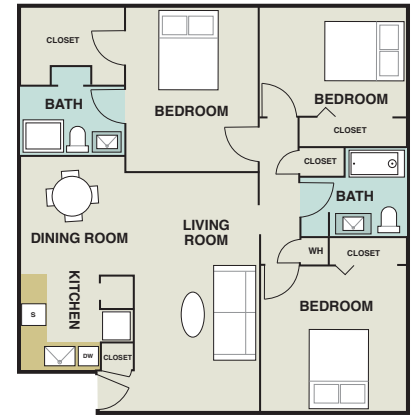
**“Cozumel”**  
 2 Bedroom / 1 Bathroom  
 840 Square Feet



**“Aruba”**  
 2 Bedroom / 1 Bathroom  
 957 Square Feet



**“Caribbean”**  
 2 Bedroom / 2 Bathroom  
 975 Square Feet



**“Cayman”**  
 3 Bedroom / 2 Bathroom  
 1,200 Square Feet

**“Catalina”**  
 2 Bedroom / 2 Bathroom  
 Washer & Dryer  
 975 Square Feet

**Apartment Features:**

Central AC & Heating  
 Ceiling Fans  
 Updated Appliances (Select Units)  
 Large Bedrooms  
 Shower Only  
 Shower/Bath Tub Combo

Patio or Balcony  
 Extra Storage  
 Walk-In Closets  
 Cable & Internet Packages Available  
 Carpet  
 Hard Wood Style Flooring

Washer/Dryer Connections  
 in select homes  
 Kitchen Windows  
 Kitchen Pantries  
 Linen Closets

**Community Features:**

Accepts Electronic Payments  
 24-Hour Emergency Maintenance  
 Covered Parking Available (Select Areas)

Community Clothes Care Centers  
 Pet Friendly  
 2 Pools

Whirlpool  
 Outdoor Grilling Areas  
 Nearby Public Transportation

**Utilities:**

The property participates in a water allocation program. Residents pay a portion of the water and sewer. Electricity is paid by residents and renters insurance is required. Basic extended cable with Time Warner is \$35 per month.

**Pet Policy:**

Maximum of 2 pets per home. Our pet-friendly apartments welcome most breeds of dogs. However, because certain dogs do not thrive well in an apartment community environment, we cannot accommodate aggressive breeds.

