



The Palm on South Padre Island Drive
 7218 South Padre Island Drive
 Corpus Christi, TX 78412

comcapp.com/thepalm
PalmOnSPID007@myLTSMail.com
 877-375-7038

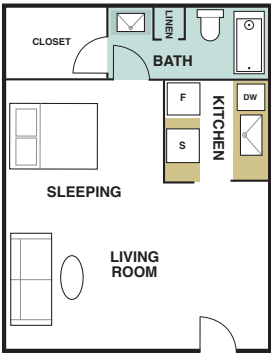


Great Location. Great Value.

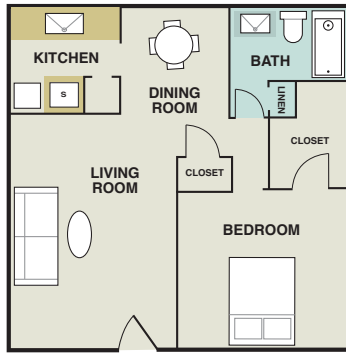
Now under new ownership and new management, The Palm is conveniently located near Texas A&M Corpus Christi, NAS-Corpus Christi, and the Army Depot.

Our studio, 1, 2 and 3-bedroom apartments offer you a variety of floor plans and amenities at a great price, including a pool and whirlpool, air-conditioned laundry facilities, and discounted extended basic cable.

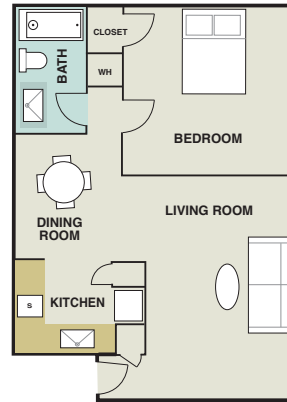
We're only 10-15 minutes away from Padre Island Beach and close to everything: major malls, hospitals, schools, churches and banks.



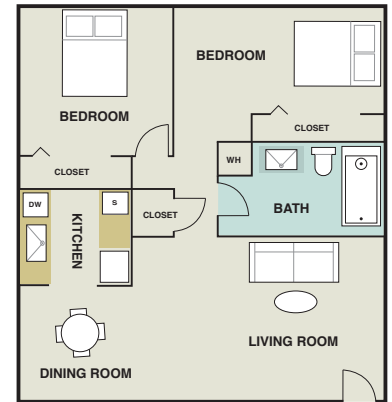
"Bali"
 Studio
 520 Square Feet
 \$150 Deposit
 \$600 Monthly



"Merida"
 1 Bedroom / 1 Bathroom
 625 Square Feet
 \$150 Deposit
 \$625 Monthly



"Fiji"
 1 Bedroom / 1 Bathroom
 680 Square Feet
 \$150 Deposit
 \$680 Monthly

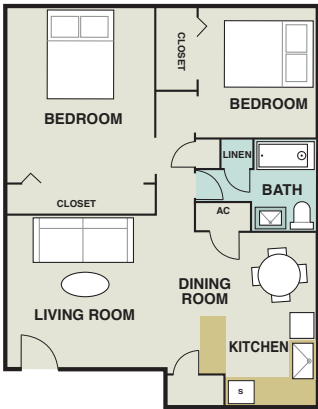


"Havana"
 2 Bedroom / 1 Bathroom
 812 Square Feet
 \$250 Deposit
 \$750 Monthly

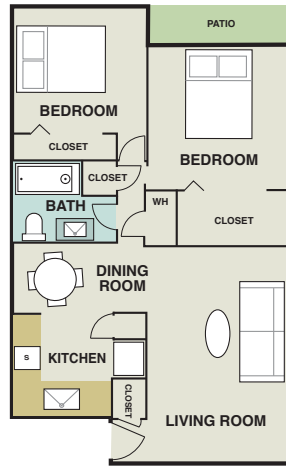


The Palm on South Padre Island Drive
 7218 South Padre Island Drive
 Corpus Christi, TX 78412

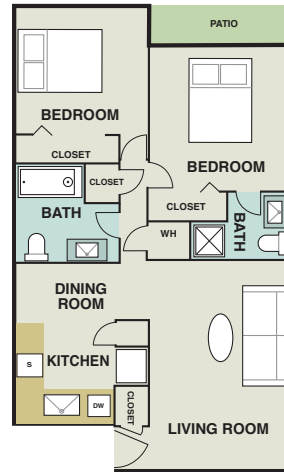
comcapp.com/thepalm
 PalmOnSPID007@myLTSMail.com
 877-375-7038



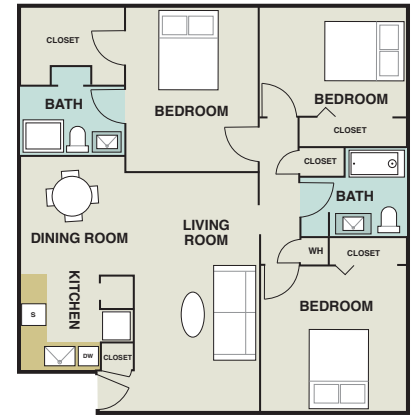
“Cozumel”
 2 Bedroom / 1 Bathroom
 840 Square Feet
 \$250 Deposit
 \$750 Monthly



“Aruba”
 2 Bedroom / 1 Bathroom
 957 Square Feet
 \$250 Deposit
 \$799 Monthly



“Caribbean”
 2 Bedroom / 2 Bathroom
 975 Square Feet
 \$250 Deposit
 \$825 Monthly



“Cayman”
 3 Bedroom / 2 Bathroom
 1,200 Square Feet
 \$350 Deposit
 \$1,150 Monthly

“Catalina”
 2 Bedroom / 2 Bathroom
 Washer & Dryer
 975 Square Feet
 \$250 Deposit
 \$875 Monthly

Apartment Features:

Central AC & Heating
 Ceiling Fans
 Updated Appliances (Select Units)
 Large Bedrooms
 Shower Only
 Shower/Bath Tub Combo

Patio or Balcony
 Extra Storage
 Walk-In Closets
 Cable & Internet Packages Available
 Carpet
 Hard Wood Style Flooring

Washer/Dryer Connections
 in select homes
 Kitchen Windows
 Kitchen Pantries
 Linen Closets

Community Features:

Accepts Electronic Payments
 24-Hour Emergency Maintenance
 Covered Parking Available (Select Areas)

Community Clothes Care Centers
 Pet Friendly
 2 Pools

Whirlpool
 Outdoor Grilling Areas
 Nearby Public Transportation

Utilities:

The property participates in a water allocation program. Residents pay a portion of the water and sewer. Electricity is paid by residents and renters insurance is required. Basic extended cable with Time Warner is \$25 per month.

Pet Policy:

Maximum of 2 pets per home. Our pet-friendly apartments welcome most breeds of dogs. However, because certain dogs do not thrive well in an apartment community environment, we cannot accommodate aggressive breeds.

